



wispea
WISDOM SERVICES FOR
PEOPLE OF EAST AFRICA

Empowerment for Sustainable Futures

Corporate Profile

www.wispea.org



“

***We are an
optimally informed,
monitored, open
and accessible hub
with relevant
experience, drive,
tools and networks
for empowering
sustainable futures.***

”

TABLE OF CONTENTS



MISSION, VISION & VALUES



PROGRAMS & INTERVENTIONS



CORE FOCUS AREAS



KEY PARTNERSHIPS

4 Economic Empowerment

6 Capacity Building

8 Health & Wellbeing

10 Gender Equity & Inclusion

12 Sustainable Livelihoods
Development

14 Climate Action



IMPACT METRICS



FUNDING MODEL



OUR TEAM



TARGET GROUP



OUR ORGANOGRAM





OUR
VISION

A society where marginalized groups, including MARPs, women, and youth, thrive in dignity, and economic self-sufficiency.



OUR
MISSION

To empower marginalized and vulnerable populations, particularly MARPs (Most At-Risk Populations), women, and youth, through sustainable livelihood programs (SLPs) that promote economic independence, social inclusion, and resilience.



OUR
VALUES

1

Strong work ethics

2

Integrity and honesty

3

**Respect to both
self and others**

4

**Hard work and
responsibility to duty**

5

**Confidence
and self esteem**

CORE FOCUS AREAS



1 First Area
ECONOMIC
EMPOWERMENT



2 Second Area
CAPACITY
BUILDING



3 Third Area
HEALTH AND
WELL-BEING



4 Fourth Area
GENDER EQUITY
AND INCLUSION



5 Fifth Area
SUSTAINABLE LIVELIHOODS
DEVELOPMENT



6 Sixth Area
CLIMATE
ACTION

COUNTIES OF FOCUS

Homa Bay, Migori, Bungoma, Nairobi, Kilifi, & Northern Frontier Counties





1

First Area
ECONOMIC
EMPOWERMENT



- » Promote vocational training and entrepreneurship for vulnerable groups.
- » Provide micro-grants and micro-loans to support business startups.
- » Partner with private sector entities for job placement opportunities.





2

Second Area
CAPACITY
BUILDING





- » Deliver training in financial literacy, business skills, and market linkages.
- » Facilitate workshops on leadership, governance, and self-advocacy.





3

Third Area HEALTH AND WELL-BEING



- » Promote awareness campaigns on HIV/AIDS and other health risks among MARPs.
- » Offer psychosocial support and counseling for women and youth affected by trauma or discrimination.





4 **Fourth Area**
**GENDER EQUITY
AND INCLUSION**





- » Implement programs addressing gender-based violence and empowering women.
- » Advocate for policy changes to protect vulnerable groups' rights.





5

Fifth Area

**SUSTAINABLE
LIVELIHOODS
DEVELOPMENT**



- » Train beneficiaries in climate-smart agriculture and sustainable practices.
- » Establish cooperatives and savings groups to encourage financial inclusion.
- » Develop alternative income-generating activities tailored to local contexts.





6

Sixth Area
CLIMATE
ACTION





- » Promote community-led adaptation strategies to mitigate climate change impacts.
- » Train beneficiaries on renewable energy technologies like solar and biogas.
- » Implement afforestation and reforestation initiatives to restore degraded lands.
- » Advocate for environmentally sustainable practices in all livelihood interventions.



TARGET GROUPS





»» Most At-Risk Populations (MARPs)

- Individuals vulnerable to HIV/AIDS, including sex workers, LGBTQ+ individuals, and people who inject drugs.

»» Women

- Survivors of gender-based violence and single mothers.
- Women living in extreme poverty or marginalized due to cultural practices.

»» Youth

- Unemployed or out-of-school youth.
- Young people in conflict-prone areas or affected by substance abuse.



PROGRAMS AND INTERVENTIONS





Vocational Training Centers

Training facilities for tailoring, carpentry, technology, and other skills aligned with market demands.



Sustainable Agriculture Projects

Initiatives to teach modern farming techniques, establish community gardens, and promote agro-processing enterprises.



Youth Innovation Hubs

Spaces equipped with tools for digital learning, coding, and creative enterprises like photography and video editing.



Women's Empowerment Groups

Platforms for mentorship, advocacy, and income-generation support.



Community Savings and Loan Associations (CSLAs)

Structures to promote financial inclusion and community-driven savings mechanisms.



KEY PARTNERSHIPS

01 *Local and International NGOs*

Collaborate for capacity building, funding, and technical support.

02 *Government Agencies*

Engage in policy advocacy and align interventions with national development strategies.



03 *Private Sector*

Foster partnerships for market access, funding, and vocational training initiatives.

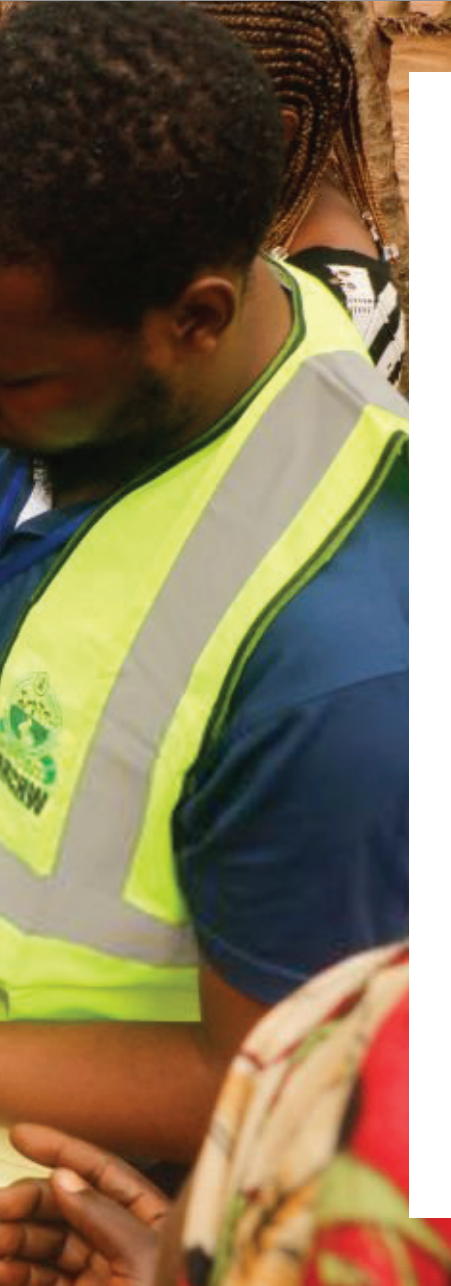
04 *Environmental Groups*

Partner with conservation organizations to support climate action programs.



IMPACT METRICS





- »» Number of beneficiaries trained in sustainable livelihood and climate-smart skills annually.
- »» Income increase among program participants within six months of completion.
- »» Reduction in HIV/AIDS prevalence rates among MARPs reached by health interventions.
- »» Percentage of women and youth reporting improved livelihoods post-intervention.
- »» Number of cooperatives or businesses established by beneficiaries.
- »» Hectares of degraded land restored through afforestation or reforestation programs.
- »» Households adopting renewable energy technologies.

FUNDING MODEL





- » **Grants** from international donors and development agencies.
- » **Crowdfunding** campaigns for specific projects.
- » **Revenue** from social enterprises established by the NGO.

OUR TEAM

Walter Odindo

Community Outreach Specialist and Board Secretary

Walter Odindo is a dedicated professional with over a decade of experience in community-based outreach programs focused on HIV/AIDS and TB treatment, as well as services for Most at Risk Populations (MARPS) in Kenya. He holds a Certificate in HIV/AIDS Management from St. Paul's University, and a Certificate in Automotive Engineering from Rotary International, both spanning 10 years of study.



Walter has actively engaged in community programs in Nairobi for the past 11 years. His expertise encompasses key areas such as trends in the HIV/AIDS pandemic, research ethics, IDU screenings, study overviews, HIV testing algorithms, HTC campaign models, questionnaire administration, and coupon management.

Walter currently serves as the Board Secretary for Wisdom Services for People of East Africa (WISPEA), where his contributions reflect his strong interpersonal skills, teamwork, and results-oriented approach. Known for his dedication, responsibility, and excellent organizational and time management abilities, he thrives in roles requiring minimal supervision. A hardworking individual, Walter is passionate about making a positive impact in his community.

Dan Jamba (CPA)

Board Treasurer

Dan Jamba is a highly skilled finance professional with over a decade of experience in accounting, finance, and administration. He holds a Bachelor's degree in Commerce, specializing in Finance, from KCA University, where he graduated in 2018. Dan is a Certified Public Accountant of Kenya (CPA-K) and an active member of the Institute of Certified Public Accountants of Kenya (ICPAK), membership number 19742, since 2016.



In addition to his academic and professional credentials, Dan has further honed his expertise through specialized training, including a COAG Agreement and Proposal Writing workshop funded by the CDC and conducted by the University of Nairobi.

Dan's career spans diverse roles, including serving as an HR, Finance & Admin Officer at Nairobi Outreach Services, an NGO where he was responsible for managing comprehensive financial processes. He also gained invaluable experience during a one-year internship with the Youth Enterprise Fund under the Public Service Commission (PSC) Internship Program.

With proven expertise in streamlining operations and enhancing organizational productivity, Dan brings a results-driven approach to every task. His commitment to excellence, combined with a deep understanding of financial operations, positions him as a trusted and impactful contributor to any organization.

Paul Jaoko

Resource Mobilization and Fundraising Lead

Paul Jaoko is a seasoned resource mobilization and stakeholder engagement specialist with over 16 years of experience fostering partnerships and building coalitions to advance agricultural innovations and rural development initiatives across sub-Saharan Africa. His expertise lies in mobilizing multi-stakeholder collaborations, leveraging his in-depth understanding of public and private sector dynamics in the social development landscape.

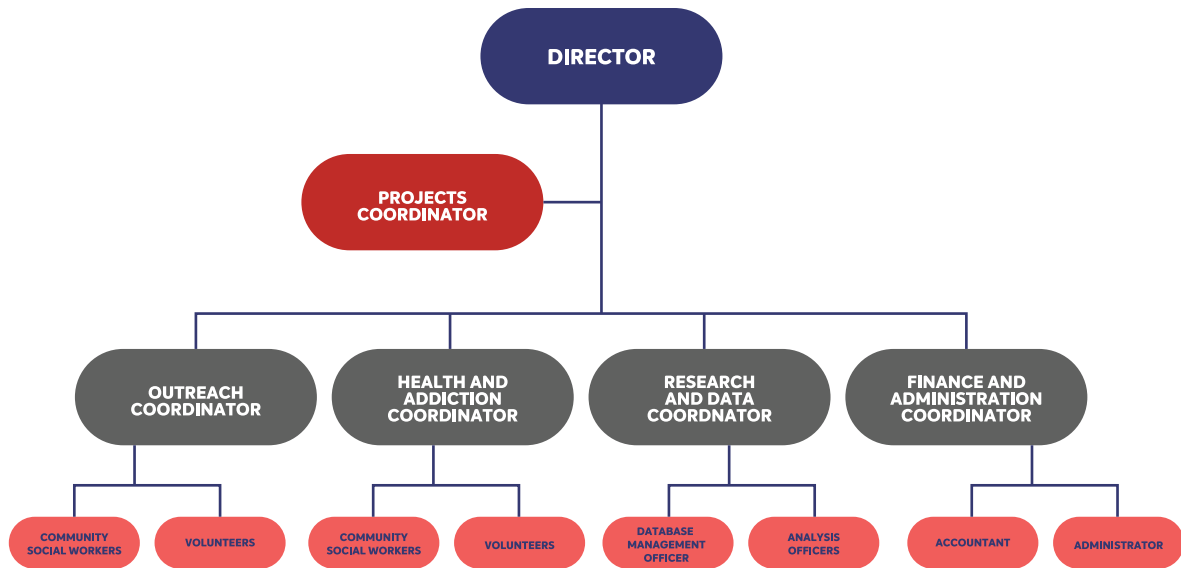


Paul has successfully managed numerous continent-wide research and development projects in Ethiopia, Somalia, Kenya, Mozambique, Tanzania, Ghana, Nigeria, South Africa, Uganda, Malawi, Burkina Faso, and Mali, among other countries. He has a proven track record of aligning diverse interests to secure funding and implement impactful projects in the agriculture and rural development sectors.

A graduate of the University of Nairobi's School of Agriculture & Veterinary Sciences, Paul holds a Bachelor of Science degree in Food Science & Technology. Additionally, he has undertaken specialized training, including a 2023 certification in Gender Financing from the Frankfurt School of Finance and Management under the AfDB-funded AFAWA Program implemented by AGF.

Paul's commitment to resource mobilization and stakeholder alignment continues to drive meaningful advancements in sustainable development across Africa.

OUR ORGANOGRAM





Ground Floor, Nicofeli Youth Club,
Kibera Drive, off Ngong Road

P.O. Box 1487-00600, Nairobi, Kenya

Tel: +254 726 722840 | +254 721 354 286

info@wispea.org

www.wispea.org

